

# MONTHLY MEMBERSHIP PROGRESS REPORT

LOCATION MINNESOTA

District 5M 6

Results as of: 3/31/2023

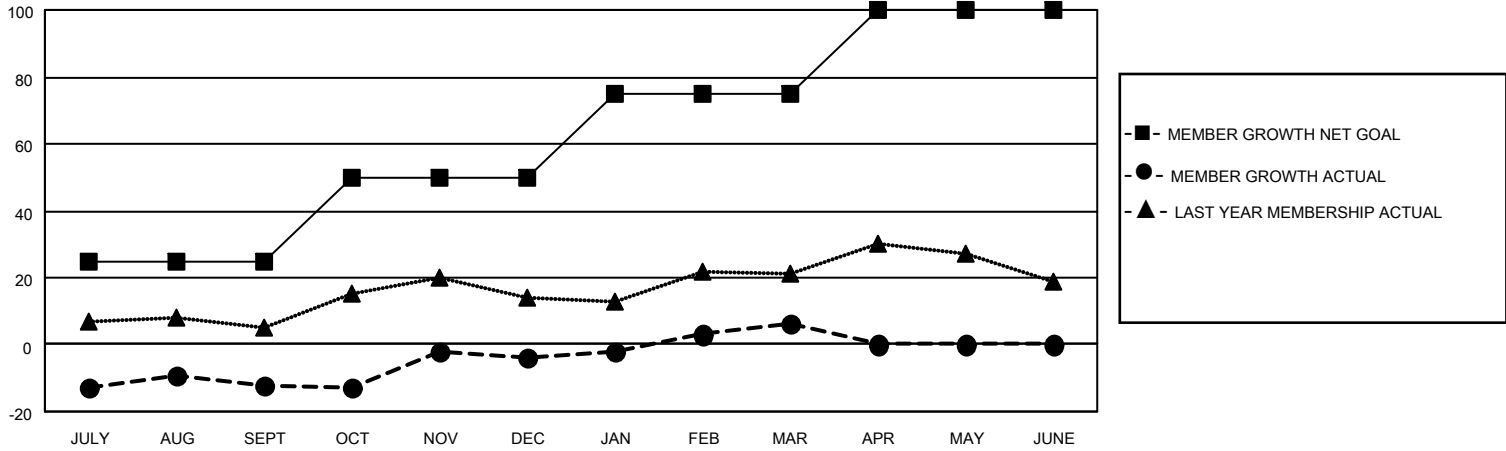
Clubs			
RESULTS FOR 2022-2023			
QUARTER	NEW CLUB GOAL	NEW CLUBS	DROPPED CLUBS
JULY/AUG/SEPT	0	0	0
OCT/NOV/DEC	0	0	0
JAN/FEB/MAR	1	0	0
APR/MAY/JUNE	1	0	0

Members			
RESULTS FOR 2022-2023			
QUARTER	MEMBER GROWTH NET GOAL	MEMBER GROWTH ACTUAL	DROPPED MEMBERS ACTUAL (including transfers)
JULY/AUG/SEPT	25	25	32
OCT/NOV/DEC	25	36	25
JAN/FEB/MAR	25	29	15
APR/MAY/JUNE	25	0	0

**GOALS AND ACTUAL NEW CLUBS CUMULATIVE**



**GOALS AND ACTUAL MEMBERS CUMULATIVE**



**DROPPED CLUBS: 0**

**22 CLUBS OF 34 ADDED 1 OR MORE NEW MEMBERS**

**GENDER DISTRIBUTION**

MALE	798 (62.05%)
FEMALE	488 (37.95%)
NON BINARY	0 (0.00%)
PREFER NOT TO ANSWER	0 (0.00%)

**DROPPED MEMBERS**

[CLICK HERE FOR CUMULATIVE MEMBERSHIP DATA](#)

DECEASED	8
CLUB CANCELLED	0
OTHER	64
<b>TOTAL</b>	<b>72</b>

TOTAL FAMILY UNIT MEMBERS 309

FAMILY MEMBERS PAYING HALF DUES 155